

2-10-11

Sunnyside Police Department Gang Suppression Plan

Situation:

1. Criminal Street Gang activity continues to be a threat to the safety of the City of Sunnyside. These street gangs consist of individuals 12-30+ years old. They are primarily Hispanic males. We are finding that most activity starts at a young age and becomes more violent as the individuals approach 20 years old. We classify gang involved youth as either "Gang Member" or "Gang Associate" using an established classification form. Estimated numbers range above 200 individuals.
2. We believe much of the violent and property crime committed within our community is done by gang involved individuals.
3. Our entire community is affected by this criminal behavior. We have had several gang related homicides and assaults contributed directly to gang activity over the past few years. Graffiti and news reports of assaults and drive by shootings continue to disrupt our quality of life.
4. Over the past two years we have observed a trend that causes us additional concern. Previously police responded to gang fights at various locations throughout the community. We have been recently responding to a significant number of drive-by shootings. Several of these shootings involve high powered assault rifles.
5. Recently we have successfully prosecuted several gang members from a 2009 shooting. These individuals received very long prison sentences. We believe this sends a strong message to adult gang members. The message is much less significant to juveniles. It also took a significant amount of time for justice to be served.
6. We believe violent gang activity is trending upwards with areas of improvement due to focused attention.
7. Many community members remain apathetic to gang violence. 'Just let them shoot each other' is common language.

Resources:

1. Our department currently has an authorized police officer staffing level of 29 officers. We currently have two vacant positions we are aggressively trying to fill with experienced lateral officers. We anticipate filling these vacancies within the next 30 days. Additionally, we have two entry level officers at the police academy. We expect them to have completed this training by June and to finish their field training program by midsummer. This will fulfill our staffing of 29.
2. Once these positions are all staffed and trained we will have the following sworn officer assignments:
 - a. Patrol shifts staffed with a sergeant and three officers. These shifts will share a power-shift officer from 3 PM to 3 AM. One power-shift officer is a K-9 handler.

- This is a total of 18 officers assigned to patrol and our recommended base staffing level.
- b. Detectives will be staffed with a sergeant, three detectives, and a drug task force detective. This is our recommended base staffing level.
 - c. The School Resource unit will consist of a sergeant and two officers.
 - d. A HUD officer will report to the SRO sergeant.
 - e. Police Command consisting of the Chief of Police and Deputy Chief.
3. The sworn officer positions are supported by the following:
 - a. Communications/Corrections Officers
 - b. Hospital Police Officers
 - c. Receptionists
 - d. Data Entry Clerk
 - e. Police Administrative Assistant
 - f. Reserve Officers
 - g. Police Explorers
 - h. Animal Control
 - i. Code Enforcement
 - j. Child Protective Services
 - k. Juvenile Probation
 - l. Adult Probation
 - m. Adult Parole
 - n. Juvenile Court
 - o. Municipal Court
 - p. District Court
 - q. Superior Court
 - r. Yakima and Benton County Law Enforcement
 - s. Federal Law Enforcement
 4. Prevention and Intervention services are provided by:
 - a. Sunnyside School District
 - b. Sunnyside Police Department GREAT Officers
 - c. Sunnyside's Promise
 - d. Comprehensive Mental Health
 - e. Child Protective Services
 - f. Nuestra Casa

Mission:

In order to make Sunnyside one of the safest communities in the state we must seek to eliminate gang activity within and around our community. This must be done with a combination of suppression, intervention, prevention, and community mobilization. The suppression efforts must be delivered aggressively and persistently using every available legal action that can be deployed.

In order to intervene in the current upward trend in gang violence this suppression must begin immediately and become effective before the summer months. These efforts will focus initially within Sunnyside and be directed outward as necessary to pursue and bring to justice individuals involved in gang behavior while eliminating their recruitment and support systems.

Concurrent community mobilization efforts must begin an effort to change community perception and to eliminate tolerance of gang behavior.

Once suppression of gang behavior has been accomplished the suppression assets must be maintained to prevent resurgence. At this time prevention and intervention efforts become crucial.

Implementation:

- 1) Concept of Operation
 - a) Gang Enforcement Unit
 - i) Personnel
 - (1) The gang enforcement unit will be created by selecting two very productive officers from the patrol squads.
 - (a) These officers will be backfilled through the hiring of two additional lateral officers.
 - (b) It is essential these officers be experienced in order to expedite their effectiveness on patrol.
 - (2) The gang enforcement unit will function as a two person uniformed team. This minimizes their need for assistance from patrol resources.
 - (3) The unit personnel will be assigned to work the same schedule.
 - (a) Their schedule will have flexible hours with varying beginning and end times. This is necessary to prevent the gang members from recognizing a work pattern and so these officers will work when they will be most effective.
 - (b) The scheduled days will conform to the collective bargaining agreement (CBA) which allows 12, 10, or 8 hour days.
 - (c) Should the CBA be too restrictive the City will propose a contract modification for this unit.
 - (4) The gang unit officers will report to the detective sergeant.
 - ii) Equipment
 - (1) Vehicle
 - (a) The gang unit will be provided a patrol vehicle. This vehicle will be outfitted with:
 - (i) Standard Police Package with lights and cage
 - (ii) In addition to standard markings will prominently display "Gang Enforcement Unit"
 - (iii) Panasonic Toughbook Mobile Data Computer (MDC)
 - (iv) Airlink Pinpoint X GPS modem connected to Verizon
 - (v) Sector Automated Ticketing
 - (vi) Dual rifle locking vehicle mount
 - (vii) Less Lethal shotgun
 - (viii) Spike Strip tire deflation device
 - (2) Uniform and Duty Gear
 - (a) Gang Unit Officers will be equipped with their basic issue plus:
 - (i) "Gang Enforcement Unit" patches for uniforms
 - (ii) Currently issued SWAT Gear
 - (iii) Digital cameras
 - (iv) Portable Video camera
 - (b) Backfilling lateral hires will be equipped with standard issue patrol equipment.
 - (3) Office
 - (a) Gang Unit Officers will be stationed in the patrol area. This area has already been adjusted to accommodate them. They will need additionally:

- (i) Two desktop computers connected to Spillman and unfiltered Internet
 - (ii) Two additional phones with voicemail.
- iii) Training
 - (1) Gang Enforcement officers will receive additional training in:
 - (a) Gang enforcement
 - (b) Officer safety tactics
 - (c) Civil Liability
- iv) Day to day tasks
 - (1) Enforcement
 - (a) Gang unit officers will identify gang involved individuals
 - (i) They will use all legal enforcement resources available to remove the gang involved individuals from our community. This includes:
 - 1. Investigation and enforcement of the gang members for all violations to include:
 - a. Criminal acts
 - b. Infractions
 - c. Code violations
 - d. Parole, probation, or release conditions
 - (ii) They will seek to legally eliminate the gang involved individuals support systems. These support systems include:
 - 1. Housing
 - a. Through crime free rental housing ordinance
 - b. Nuisance property ordinance
 - c. Code enforcement
 - 2. Transportation
 - a. Through enforcement of traffic laws
 - b. Impounding illegally driven vehicles
 - c. Enforcement action on gang supportive individuals providing transportation to gang involved individuals
 - d. Reducing the availability of easily stolen vehicles
 - 3. Employment
 - a. Assist employers in identifying criminally active employees
 - 4. Family
 - a. Family members must be discouraged from providing resources to gang involved individuals
 - b. The unit will seek to bring legal enforcement action on all adult family members providing support to gang involved individuals.
 - (iii) They will use all legally available resources to protect children living within gang houses.
 - 1. It has been clearly demonstrated that gang houses are frequently threatened by gunfire.
 - 2. This gunfire is a significant danger to child occupants of these and surrounding houses.
 - 3. As gang houses are identified, gang unit officers will seek Child Protective Services placement of all non-gang involved children within the household.
 - 4. Gang houses will be identified through direct observation, criminal events, and analysis of patrol responses.

- (iv) Gang officer will use all legally available resources to protect neighbors and surrounding property owners from gang crime.
 - 1. These gang unit officers will serve as advocates for surrounding property owners.
 - 2. They will coordinate with the “gang” prosecutor to bring injunctions and civil enforcement action on behalf of the neighbors and our community.
 - (2) Presence
 - (a) The gang unit will be expected to be visibly present within the community whenever possible. This will be accomplished through:
 - (i) Visible enforcement of gang crime
 - (ii) Visible contact of gang involved individuals
 - (iii) Gang awareness training to community members and groups
 - (3) Intelligence
 - (a) Surveillance
 - (i) Covert (unmarked car, non-uniformed observation for gang activity)
 - (ii) Visible (parking patrol vehicle in front of known gang houses)
 - (b) Review of crime analysis reports
 - (c) Review of gang contacts by other units
 - (d) Collection of field interviews through frequent contact of gang members in and around our community.
 - (e) Certification of gang members
 - (f) Use of informants both paid and unpaid
 - (4) Coordination
 - (a) Patrol (daily)
 - (b) Detectives (daily)
 - (c) SWAT (as needed)
 - (d) Jail (daily)
 - (e) Schools (daily)
 - (f) Crime Analyst (daily)
 - (g) Surrounding Agencies (as needed)
 - (h) Federal Agencies (as needed)
 - (5) Briefings
 - (a) Command personnel on current activity and trends
 - (b) School personnel of significant events
 - (c) City elected officials of accomplishments or resources needed.
- b) Detectives
 - i) One detective will be assigned to work with and support the gang unit officers primarily for:
 - (1) Search warrants
 - (2) Court orders
 - (3) Subpoenas for phone records
- c) Patrol squad gang officers
 - i) Each patrol shift is assigned one officer with gang responsibilities.
 - ii) This officer will work routinely with the gang unit and prioritized detective.

Service and Support:

- 1) Crime Analyst
 - a) Office
 - i) The Analyst will be housed in an office near the detective unit.
 - ii) The police conference room will be used as the department gang enforcement war room.
 - iii) The Analyst will need:
 - (1) Phone service
 - (2) A computer with access to Spillman and unfiltered Internet
 - (3) I2 Analyst Software (commonly used analysis software)
 - b) Day to Day Tasks
 - i) The crime analyst will routinely review all police reports
 - (1) Reports must be submitted in a timely manner
 - (2) Reports must be properly coded
 - (3) Reports must contain adequate information
 - (a) Inadequate reports will be corrected
 - ii) The analyst will process all available data in order to provide timely intelligence briefings and pattern analysis
 - iii) The analyst will provide recommendations to the gang unit for further enforcement action identified through report review.
- 2) Prosecutor Support
 - a) The city will provide additional legal support through our contracted attorney
 - b) This attorney will assist with prosecution, court orders, civil abatement, and the creation of any additional ordinances.
- 3) Public Relations Officer
 - a) The Public Relations Officer will begin a campaign designed to:
 - i) Educate parents of the danger to their children and their responsibility.
 - ii) Educate teachers in gang awareness
 - iii) Change youth opinions to reflect anti-gang sentiment
 - iv) Change community opinions to reflect anti-gang sentiment
 - (1) Show why gang activity damages our community
 - (2) Show how gang activity negatively affects them personally
 - (3) Show why it is important that community members call the police when observing gang activity.
 - b) The Public Relations Officer will craft the campaign in a manner to show that our community has hope and the situation can and will improve.
- 4) SWAT Team
 - a) Team resources will be provided to the gang unit for service of all search warrants at gang houses.
- 5) Corrections
 - a) Corrections officers will provide classification documents detailing gang involvement when requested.
 - b) Intelligence information collected from jailed individuals
- 6) Code enforcement
 - a) Code enforcement employees will be prioritized for gang enforcement
 - b) Graffiti identified must be digitally photographed and provided to the gang unit

Command:

- 1) Police Chief
 - a) The Chief will provide monthly progress reports to the City Manager and council until the gang violence is eliminated and beyond
- 2) Deputy Chief
 - a) The Deputy Chief will coordinate assigned units and personnel to ensure efficient and cost effective performance.

Costs

Year 1

	Startup Costs	Ongoing Costs	
1. Crime Analyst			
Analyst		\$ 70,000	9 months
Desk Computer	\$ 1,500		
Software	\$ 5,500		
	<hr/>	<hr/>	
	\$ 7,000	\$ 70,000	
2. Gang Unit			
Lateral Officer #1			
Salary and Benefits		\$ 51,000	9 months
Equipment*	\$ 5,500		
Desk Computer	\$ 1,500		
Lateral Officer #2			
Salary and Benefits		\$ 51,000	9 months
Equipment*	\$ 5,500		
Desk Computer	\$ 1,500		
Vehicle Costs			
Vehicle	\$ 40,000		
MDC/Modem	\$ 6,000		
Verizon Wireless		\$ 600	
Sector E-Ticketing	\$ 600		
Workspace			
Setup Costs	\$ 5,000		
	<hr/>	<hr/>	
	\$ 65,600	\$ 102,600	
Total Project Costs	\$ 72,600	\$ 172,600	

* Radio, Gun, Taser, Vest, Uniforms, Leather gear

Year 2

1. Crime Analyst

Analyst 5% increase \$ 93,000 12 months

2. Gang Unit

Lateral Officer #1

Salary and Benefits 5% increase \$ 71,500 12 months

Lateral Officer #2

Salary and Benefits 5% increase \$ 71,500 12 months

Vehicle Costs

Vehicle Fuel \$ 4,000

Verizon Wireless \$ 600

\$ - \$ 240,600

Year 3

1. Crime Analyst

Analyst 5% increase \$ 98,000 12 months

2. Gang Unit

Lateral Officer #1

Salary and Benefits 5% increase \$ 75,100 12 months

Lateral Officer #2

Salary and Benefits 5% increase \$ 75,100 12 months

Vehicle Costs

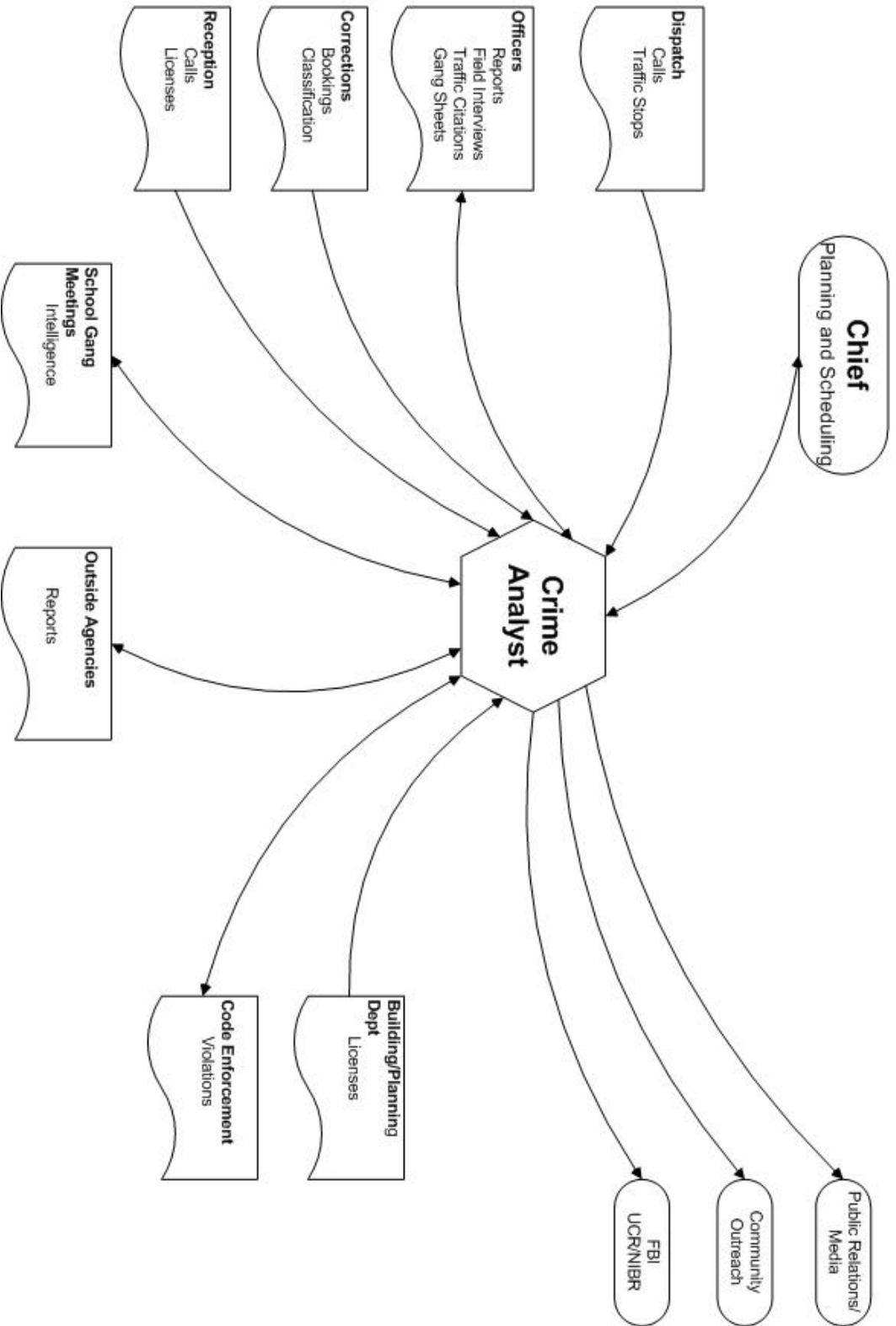
Vehicle Fuel \$ 4,000

Verizon Wireless \$ 600

\$ - \$ 252,800

Crime Analyst Information Flow

02/10/2011



1. Complete Proposal

Sunnyside Police
02/10/2011

